

SUMMARY



How to correctly measure my foot ?

Women's shoe size chart (cm) ?

Women's shoe size chart-specific to wide feet (cm) ?

Men's shoe size chart (cm) ?

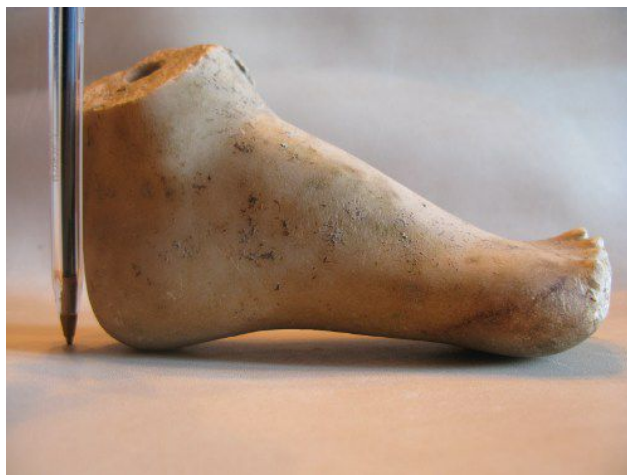
Children's shoe size chart (cm) ?

How to complete my order ?

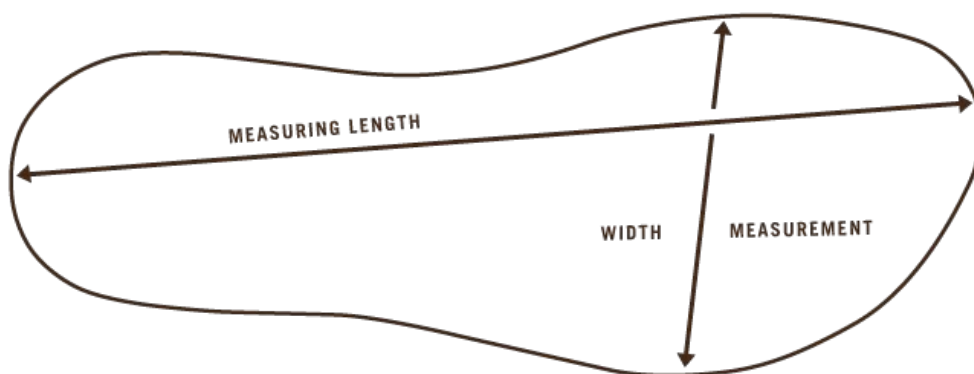
HOW TO CORRECTLY MEASURE MY FOOT ?

Please trace the outline of your feet while standing on a sheet of paper. The pen should be perpendicular to the floor while tracing. Then you consult the following tables.

For women : there are two tables. The first for standard feet (classic sole) and the second, for wide feet (special sole notified by an S).

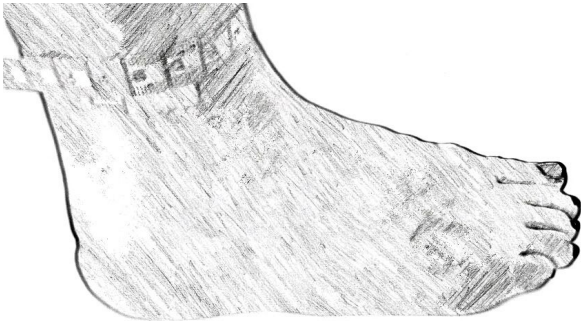


If you have sandals similar to ours and your feet cover a maximum of the soles, you can measure these (length and width as shown on the diagram below and compare them with our size chart (length and width of finished sole).

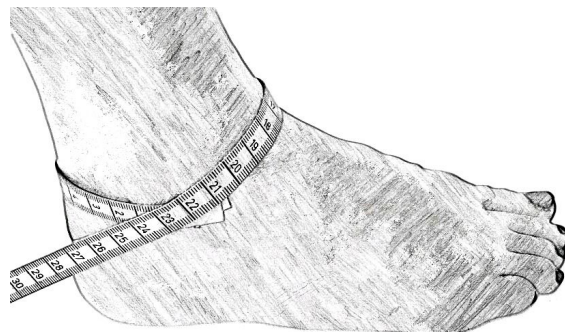


For a pair of Salomés, Bérénices or Plaka, indicate the length around the ankle bone a measure taken above and below the ankle bone (For example : 21cm above, 24cm below).

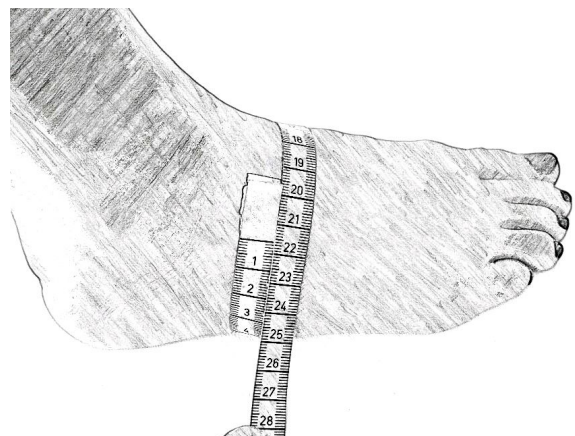
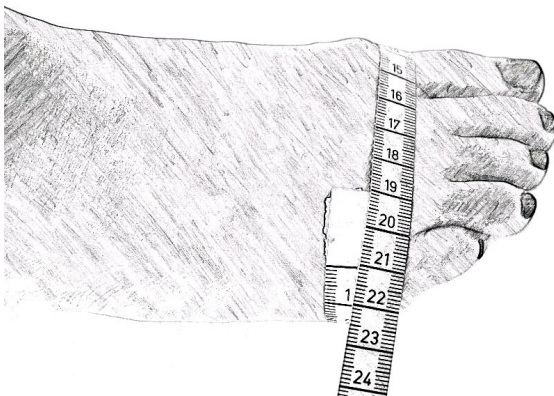
Above the ankle bone :



Below the ankle bone :



For all other styles, take two measurements of your foot while standing: one of the bridge and one of the arch of the foot. Measurements must go around the foot! (example: for a shoe size of 38 one has about 21,5 cm around the bridge and 23 cm around the arch).



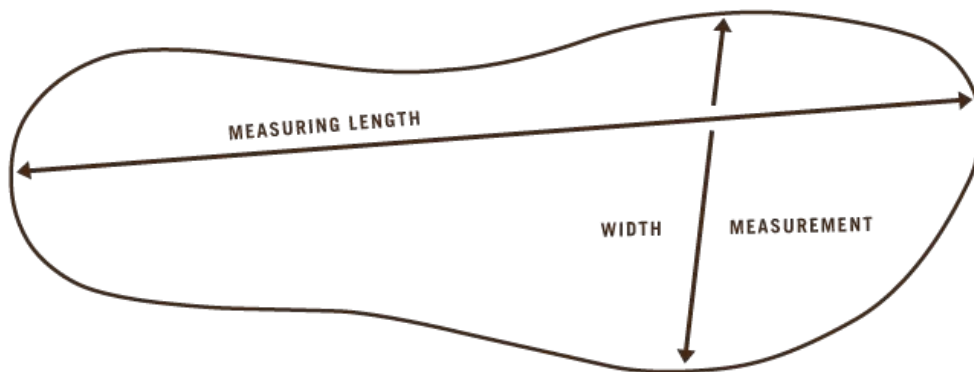
WOMEN'S SHOE SIZE CHART (CM)

Foot width	8 à 9			8,5 à 9,5			9 à 10	
Minimum foot length	22,3	23	23,5	24,1	24,8	25,5	26,2	26,8
Maximum foot length	22,5	23,2	23,8	24,5	25	25,8	26,5	27
Shoe Size	35	36	37	38	39	40	41	42
Sole length	23	23,7	24,3	25	25,6	26,3	27	27,5
Sole Width	8,5	8,5	8,7	9	9,4	9,7	9,7	9,9



To take measurements and refer to the grid above, trace the contour of your foot while standing on a sheet of paper (the pen should be perpendicular to the floor while tracing).

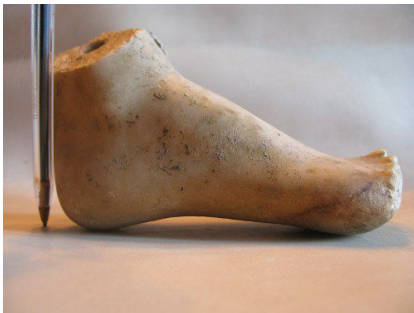
If you have sandals similar to ours and your feet cover a maximum of the soles, you can measure these (length and width as shown on the diagram below and compare them with our size chart (length and width of finished sole).



WOMEN'S SHOE SIZE CHART (CM)

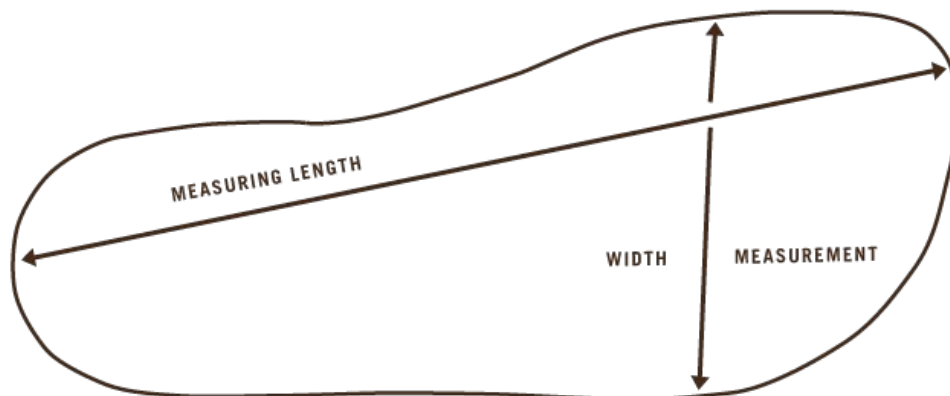
SPECIFIC SOLES (WIDE FEET)

Foot width	9 à 10			10 à 10,5		10,5 à 11	
Minimum foot length	21,8	22,3	23	23,8	24,5	25,3	25,8
Maximum foot length	22	22,5	23,2	24	24,7	25,5	26
Shoe Size	34 S	35 S	36 S	37 S	38 S	39 S	40 S
Sole length	22,5	23	23,7	24,4	25,2	26	26,6
Sole width	8,9	9,2	9,4	9,6	9,8	10,1	10,4



To take measurements and refer to the grid above, trace the contour of your foot while standing on a sheet of paper (the pen should be perpendicular to the floor while tracing).

If you have sandals similar to ours and your feet cover a maximum of the soles, you can measure these (length and width as shown on the diagram below and compare them with our size chart (length and width of finished sole).

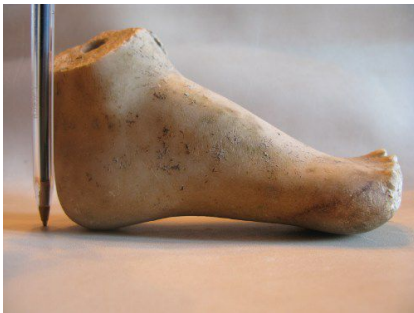


Special Sole 37 / Rondini St-Tropez S7

For the Salomées, Serpent, Bikini and Bérénices styles: 10 euros fee

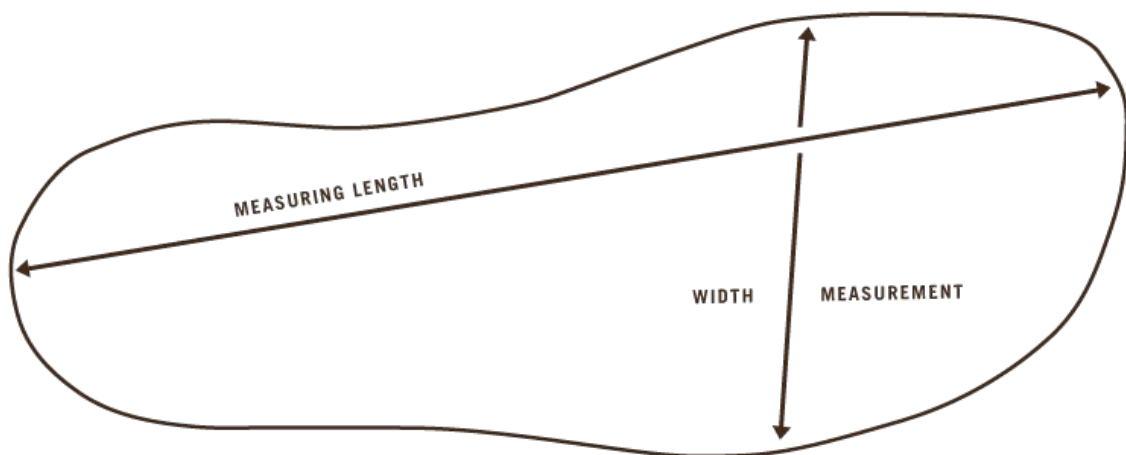
MEN'S SHOE SIZE CHART (CM)

Foot width	9 à 10			9,5 à 11,5			10 à 12	
Minimum foot length	24,8	25,6	26,3	26,8	27,5	28,3	29	29,5
Maximum foot length	25	25,6	26,5	27	27,7	28,5	29,2	29,8
Shoe Size	39	40	41	42	43	44	45	46
Sole length	25,5	26,3	27	27,5	28,2	29	29,7	30,3
Sole width	9,6	10,2	10,5	10,7	11	11	11,5	11,7



To take measurements and refer to the grid above, trace the contour of your foot while standing on a sheet of paper (the pen should be perpendicular to the floor while tracing).

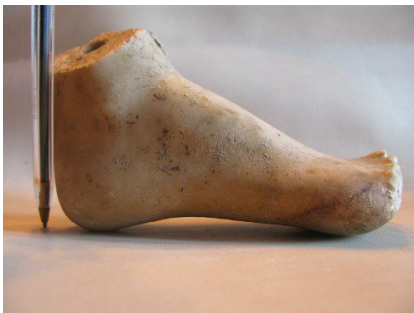
If you have sandals similar to ours and your feet cover a maximum of the soles, you can measure these (length and width as shown on the diagram below and compare them with our size chart (length and width of finished sole).



Semelle Homme 42 / Rondini St-Tropez 2

CHILDREN'S SHOE SIZE CHART (CM)

Children															
Minimum foot length	13,8	14,5	15,2	16	16,7	17,3	18,1	18,8	19,3	19,9	20,5	21,1	21,7	22,3	22,9
Maximum foot length	14	14,7	15,4	16,2	16,9	17,5	18,3	19	19,5	20,1	20,7	21,3	21,9	22,5	23,1
Shoe Size	23	24	25	26	27	28	29	30	31	32	33	34	35	36	37
Sole length	15,5	16	16,6	17,3	18,2	19	19,5	20	20,5	21,2	21,8	22,5	23	23,7	24,4

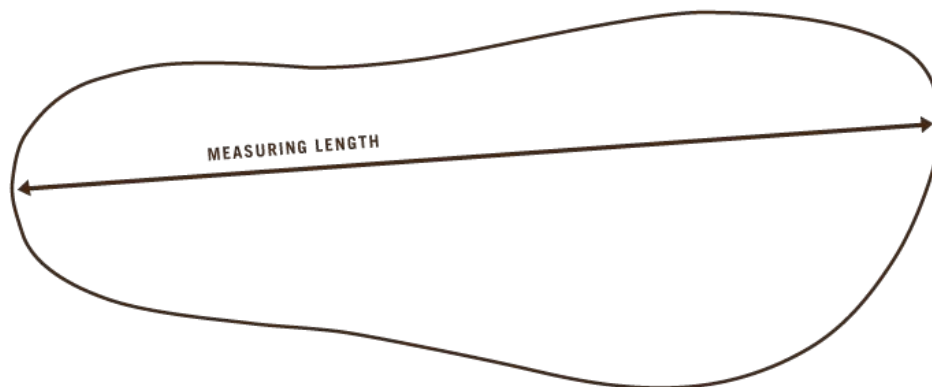


To take measurements and refer to the grid above, trace the contour of your foot while standing on a sheet of paper (the pen should be perpendicular to the floor while tracing)

WARNING

Tightening straps during installation is specific to the child and may not be suitable for adults.

If you have sandals similar to ours and your feet cover a maximum of the soles, you can measure these (length and width as shown on the diagram below and compare them with our size chart (length and width of finished sole).



Men Sole 30 / Rondini St-Tropez 0

HOW TO COMPLETE MY ORDER ?

Add the product to my basket.

Panier : (vide) 

If you do not already have an account, please sign-up by completing all necessary information.

Créez votre compte

Saisissez votre adresse e-mail pour créer votre compte

Adresse e-mail

If you already have an account, type in your e-mail address and password.

Déjà Inscrit?

Adresse e-mail

Mot de passe

Mot de passe oublié ?

Proceed to on-line payment